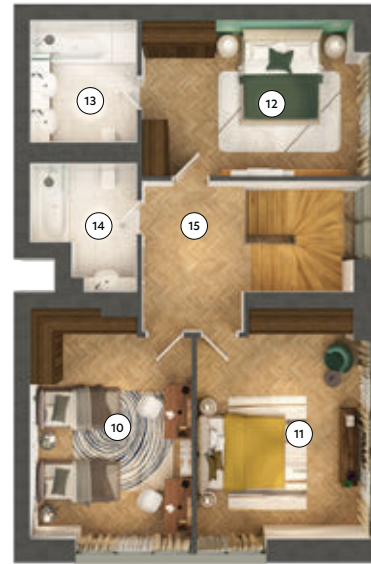




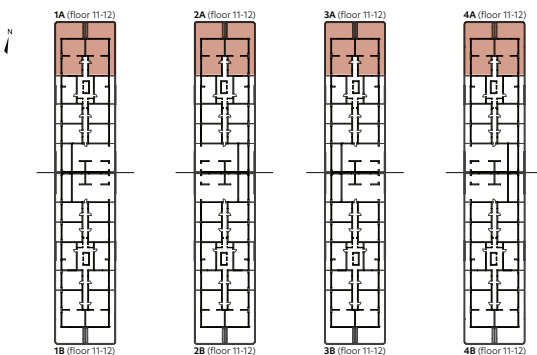
Level 1



Level 2

## 4-Bedroom Duplex

type D5E2



### Level 1

1. Living room	31,35 m <sup>2</sup>
2. Kitchen	16,30 m <sup>2</sup>
3. Bedroom	16,33 m <sup>2</sup>
4. Bathroom	4,62 m <sup>2</sup>
5. Dressing	4,85 m <sup>2</sup>
6. Hallway	10,77 m <sup>2</sup>
7. Staircase	8,10 m <sup>2</sup>

Usable Area 92,32 m<sup>2</sup>

8. Balcony	18,09 m <sup>2</sup>
9. Terrace	62,43 m <sup>2</sup>

Total Usable Area - Level 1 172,84 m<sup>2</sup>

### Level 2

10. Bedroom	21,59 m <sup>2</sup>
11. Bedroom	22,96 m <sup>2</sup>
12. Bedroom	20,56 m <sup>2</sup>
13. Bathroom	7,60 m <sup>2</sup>
14. Bathroom	6,68 m <sup>2</sup>
15. Hallway	9,37 m <sup>2</sup>

Usable Area 88,76 m<sup>2</sup>

Total Usable Area - Level 2 88,76 m<sup>2</sup>

Total Usable Area 261,60 m<sup>2</sup>  
Built Area 223,32 m<sup>2</sup>