

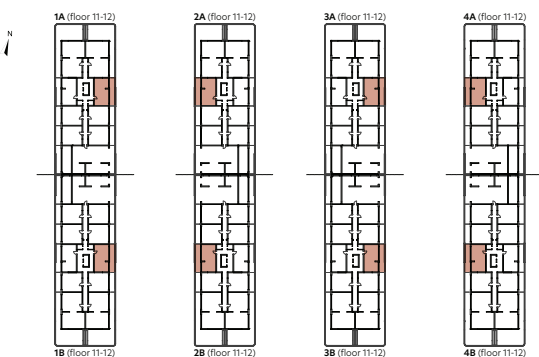


Level 1

Level 2

2-Bedroom Duplex

type D3C1



Level 1

1. Living room	19,00 m ²
2. Kitchen	10,15 m ²
3. Bathroom	3,05 m ²
4. Hallway	7,63 m ²
5. Staircase	6,92 m ²

Usable Area 46,75 m²

6. Balcony	6,33 m ²
7. Terrace	9,92 m ²

Total Usable Area - Level 1 63,00 m²

Level 2

8. Bedroom	15,70 m ²
9. Bedroom	18,71 m ²
10. Bathroom	5,51 m ²
11. Bathroom	3,22 m ²
12. Hallway	3,07 m ²

Usable Area 46,21 m²

Total Usable Area - Level 2 46,21 m²

Total Usable Area 109,21 m²
Built Area 119,12 m²