



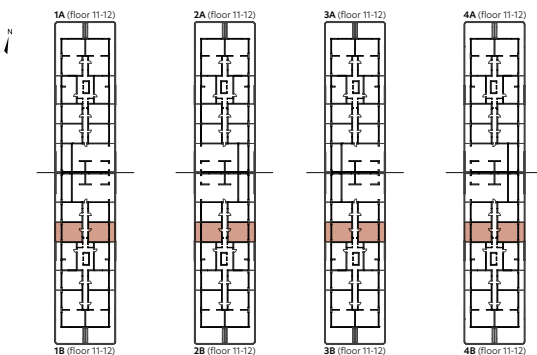
Level 1



Level 2

2-Bedroom Duplex

type D3B2



Level 1

1. Living room	19,28 m ²
2. Kitchen	15,77 m ²
3. Bathroom	3,00 m ²
4. Hallway	3,26 m ²
5. Staircase	5,81 m ²

Usable Area 47,12 m²

6. Balcony 12,66 m²

Total Usable Area - Level 1 59,78 m²

Level 2

7. Bedroom	14,89 m ²
8. Bedroom	16,21 m ²
9. Bathroom	4,94 m ²
10. Bathroom	4,41 m ²
11. Hallway	4,77 m ²

Usable Area 45,22 m²

Total Usable Area - Level 2 45,22 m²

Total Usable Area 105,00 m²
Built Area 116,81 m²