



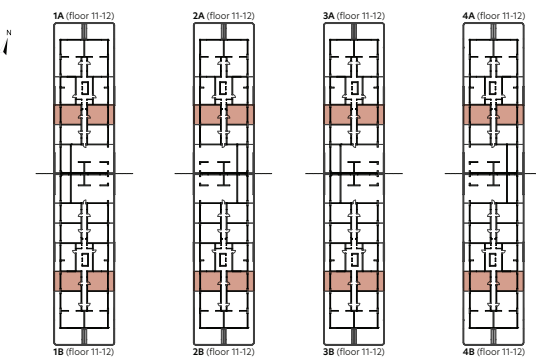
Level 1



Level 2

2-Bedroom Duplex

type D3A2



Level 1

1. Living room	19,33 m ²
2. Kitchen	14,11 m ²
3. Bathroom	2,96 m ²
4. Hallway	2,76 m ²
5. Staircase	5,81 m ²

Usable Area 44,97 m²

6. Balcony 12,12 m²

Total Usable Area - Level 1 57,09 m²

Level 2

7. Bedroom	14,90 m ²
8. Bedroom	14,95 m ²
9. Bathroom	4,94 m ²
10. Bathroom	3,86 m ²
11. Hallway	4,18 m ²

Usable Area 42,83 m²

Total Usable Area - Level 2 42,83 m²

Total Usable Area 99,92 m²
Built Area 111,50 m²