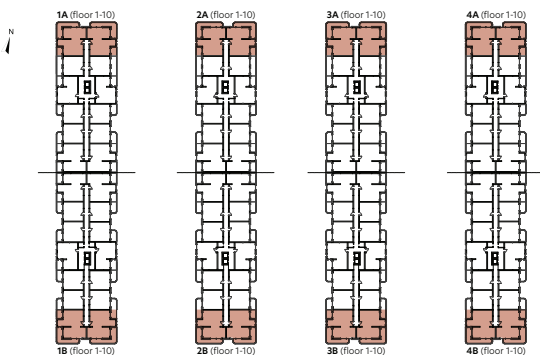




2-Bedroom Apartment

type 3l



1. Living room	18,18 m ²
2. Kitchen	10,38 m ²
3. Bedroom	14,72 m ²
4. Bathroom	4,61 m ²
5. Bathroom	3,67 m ²
6. Bedroom	12,50 m ²
7. Hallway	5,50 m ²

Usable Area 69,56 m²

8. Balcony	5,50 m ²
9. Balcony	17,99 m ²

Total Usable Area 93,05 m²

Built Area 90,86 m²