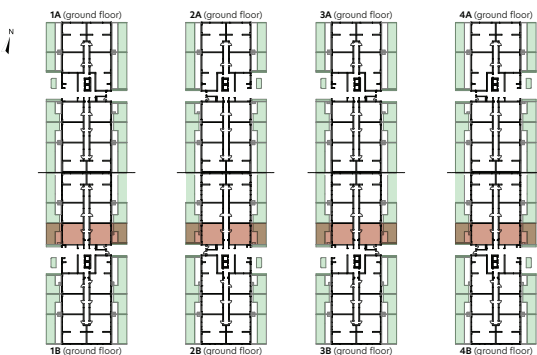




Double Studio

type 2B (with Private garden)



1. Living room + Kitchen	38,83 m ²
2. Bathroom	4,53 m ²
3. Hallway	2,08 m ²
Usable Area	45,44 m²
4. Private garden	33,62 m ²
Total Usable Area + Private garden	79,06 m²
Built Area	56,79 m ²