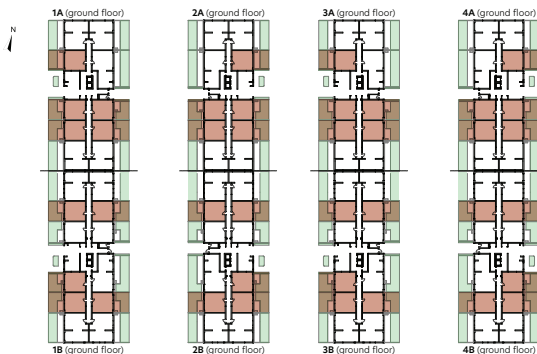




Double Studio

type 2A (with Private garden)



1. Living room + Kitchen	36,85 m ²
2. Bathroom	4,53 m ²
3. Hallway	2,09 m ²
Usable Area	43,47 m²
4. Private garden	34,72 m ²
Total Usable Area + Private garden	78,19 m²
Built Area	53,51 m ²